

SATURN 1250 LED

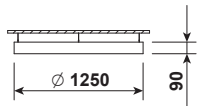


Pendant direct or direct / indirect LED luminaire.

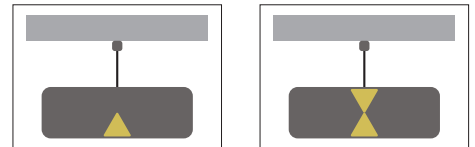
Mounting:	Suspended on 1,5m long steel wire suspension (with wire length control)
Body material:	Steel and aluminium
Colour:	Standard Gray 9006, other RAL colours on request (please add RAL code after index number)
LED module:	Philips / Osram or Tridonic LED module included
Colour temperature:	3000K or 4000K
Colour Rendering Index (CRI)	>80 in standard
Driver:	Electronic driver in standard, DALI on request
Emergency unit:	On request - Standard or DALI 3 hour emergency unit
Movement sensor:	on request
Daylight control sensor:	on request
Operating temperature range:	0°C ... +40°C
IP Class:	IP20 in standard, IP44 on request
Power:	220-240V 50/60Hz
Lighting direction:	Direct lighting - index 5971, 4838, 5665, 5666 direct / indirect lighting - index 5971.UD, 4838.UD, 5665.UD, 5666.UD
Reflector type:	Aluminium white
Light distribution:	Symmetric
Diffuser:	White acrylic diffuser [WD] in standard, acrylic frosted [AC], microprismatic [MPR] or any other on request.
General data:	5 Years standard warranty Different lumen output or wattage available on request All other technical features such as : Luminaire Efficacy, LOR, Lumen maintenance L/B etc. available in our pricelist Wattage of products may vary due to constant LED efficacy improvements. Luminous flux & Luminaire Power tolerance +/- 10%. System power consumption (LED module & driver) depends on components used



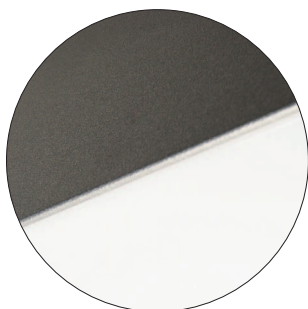
Index no.	Lumen output [lm]	Power [W]	Colour temp. [K]	CRI	Lifetime [H]	Warranty [Years]	MacAdam [SDCM]	Weight [kg]
5971.13200/830	13200	84	3000	Ra > 80	50.000	5	3	12,50
5971.13200/840	13200	84	4000	Ra > 80	50.000	5	3	12,50
UP/DN								
5971.UD.13200/830	13200	84	3000	Ra > 80	50.000	5	3	12,50
5971.UD.13200/840	13200	84	4000	Ra > 80	50.000	5	3	12,50



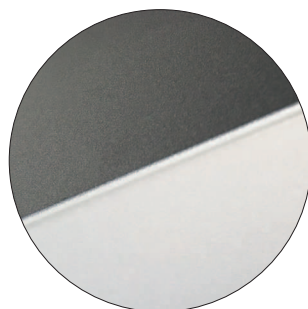
Available luminaire versions



[WD] diffuser



[AC] diffuser



[MPR] diffuser

