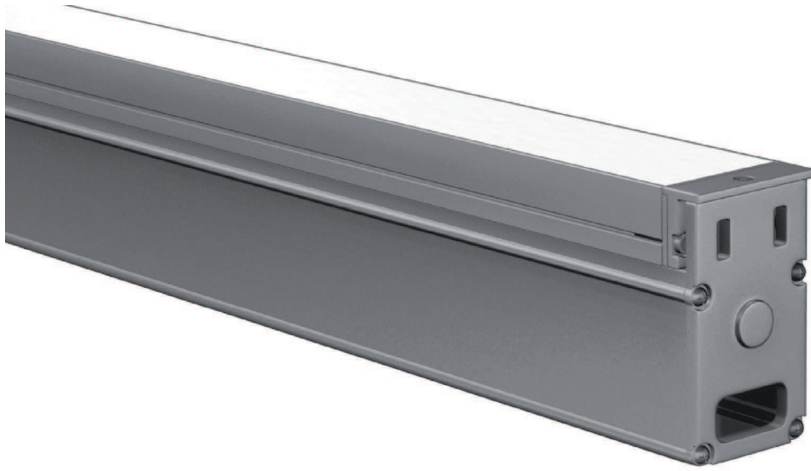


SLIM LED ING 1



Ground mounted IP67 LED luminaire.

- Mounting:** On the ground
- Body material:** Aluminium and stainless steel
- Colour:** Standard Anthracite grey 7016, other RAL colours on request (please add RAL code after index number)
- LED module:** Philips / Osram or Tridonic LED module included
- Colour temperature:** 4000K
- Colour Rendering Index (CRI)** >80 in standard
- Driver:** Electronic driver
- Emergency unit:** N/A
- Movement sensor:** N/A
- Daylight control sensor:** N/A
- Operating temperature range:** -20°C ... +40°C
- IP Class:** IP67
- Power:** 220-240V 50/60Hz
- Lighting direction:** Direct lighting
- Reflector type:** Integrated lenses
- Light distribution:** Symmetric
- Diffuser:** Clear tempered glass in standard, mat on request
- General data:** 5 Years standard warranty

All other technical features such as : Luminaire Efficacy, LOR, Lumen maintenance L/B etc. available in our pricelist

Wattage of products may vary due to constant LED efficacy improvements. Luminous flux & Luminaire Power tolerance +/- 10%.

System power consumption (LED module & driver) depends on components used



Index no.	Lumen output [lm]	Power [W]	Colour temp. [K]	Number of diodes	Lifetime [H]	Warranty [Years]	Length [mm]
3489.9	880	11	4000	9	50000	3	357 mm
3489.18	1760	22	4000	18	50000	3	618 mm
3489.28	2720	34	4000	28	50000	3	918 mm
3489.38	3680	46	4000	38	50000	3	1218 mm

