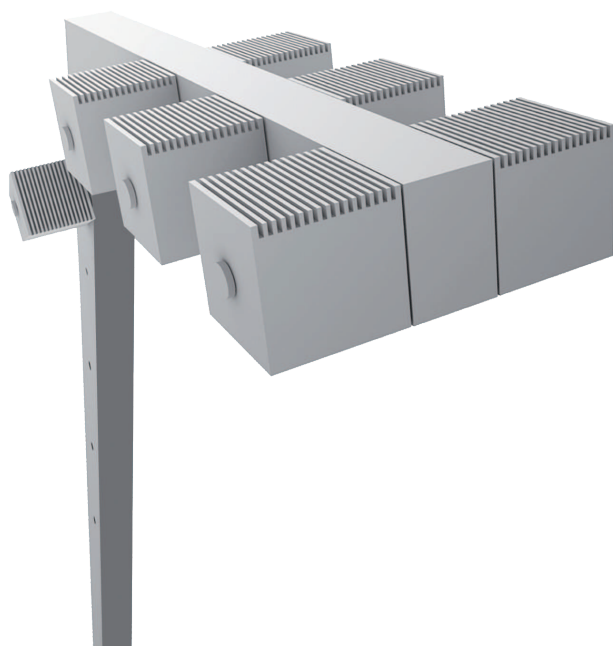


L-LIGHT



designed by **Andrew Pruszyński**
 www.bdesign.com.pl
 technical development and production by Imperial

Outdoor IP65 LED luminaire.

Mounting:	On the ground
Body material:	Aluminium and steel
Colour:	Standard gray RAL 9006, other RAL colours on request (please add RAL code after index number)
LED module:	Philips / Osram or Tridonic LED module included
Colour temperature:	3000K or 4000K
Colour Rendering Index (CRI):	>80 in standard
Driver:	Electronic driver
Emergency unit:	N/A
Movement sensor:	N/A
Daylight control sensor:	N/A
Operating temperature range:	-20°C ... +40°C
IP Class:	IP65
Power:	220-240V 50/60Hz
Lighting direction:	Direct lighting with possibility of light direction adjustment
Reflector type:	N/A
Light distribution:	Symmetric
Diffusor:	Clear tempered glass in standard, mat on request
General data:	5 Years standard warranty

All other technical features such as : Luminaire Efficacy, LOR, Lumen maintenance L/B etc. available in our pricelist

Wattage of products may vary due to constant LED efficacy improvements. Luminous flux & Luminaire Power tolerance +/- 10%.

System power consumption (LED module & driver) depends on components used



Index no.	Lumen output [lm]	Power [W]	Colour temp. [K]	CRI	Lifetime [H]	Warranty [Years]	MacAdam [SDCM]	Weight [kg]
2838.24000/830	24000	216	3000	Ra > 80	50.000	5	3	50,00
2838.24000/840	24000	216	4000	Ra > 80	50.000	5	3	50,00

