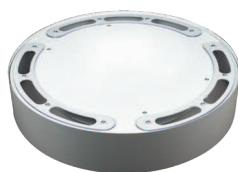
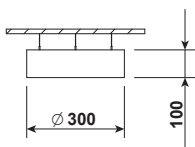


**PLAFO 300 LED PND**

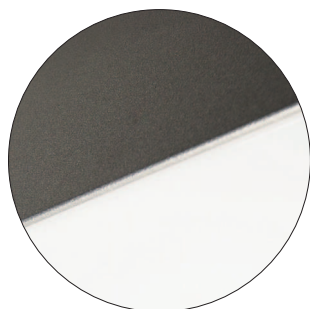


Index no.	Lumen output [lm]	Power [W]	Colour temp. [K]	CRI	Lifetime [H]	Warranty [Years]	MacAdam [SDCM]	Weight [kg]
3512.PND.2500/830	2500	21	3000	Ra > 80	50.000	5	3	3,00
3512.PND.2500/840	2500	21	4000	Ra > 80	50.000	5	3	3,00
<b>UP/DN</b>								
6607.PND.2500/830	2500	21	3000	Ra > 80	50.000	5	3	3,00
6607.PND.2500/840	2500	21	4000	Ra > 80	50.000	5	3	3,00

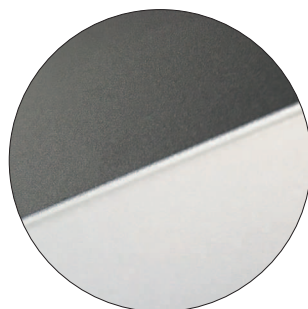


Direct/indirect version

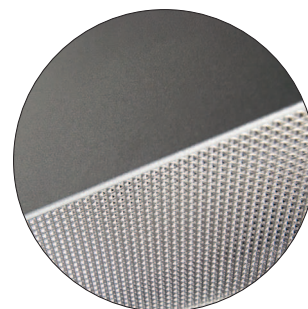
[WD] diffuser



[AC] diffuser



[MPR] diffuser



Pendant direct or direct / indirect LED luminaire.

- Mounting:** Suspended on 1,5m long steel wire suspension ( with wire length control )
- Body material:** Steel and aluminium
- Colour:** Standard Gray 9006, other RAL colours on request ( please add RAL code after index number )
- LED module:** Osram or Tridonic LED module included
- Colour temperature:** 3000K or 4000K
- Colour Rendering Index (CRI)** >80 in standard
- Driver:** Electronic integrated driver in standard, DALI on request
- Emergency unit:** N/A
- Movement sensor:** N/A
- Daylight control sensor:** N/A
- Operating temperature range:** 0°C... +40°C
- IP Class:** IP20 in standard, IP44 on request
- Power:** 220-240V 50/60Hz
- Lighting direction:** Direct lighting - index 3512.  
XXXX, direct / indirect lighting - index 6607.XXXX
- Reflector type:** Aluminium white
- Light distribution:** Symmetric
- Diffuser:** White acrylic diffuser [WD] in standard, acrylic frosted [AC], microprismatic [MPR] or any other on request.
- General data:** 5 Years standard warranty  
  
Different lumen output or wattage available on request  
  
All other technical features such as : Luminaire Efficacy, LOR, Lumen maintenance L/B etc. available in our pricelist  
  
Wattage of products may vary due to constant LED efficacy improvements. Luminous flux & Luminaire Power tolerance +/- 10%.  
  
System power consumption (LED module & driver) depends on components used

**Available luminaire versions**

