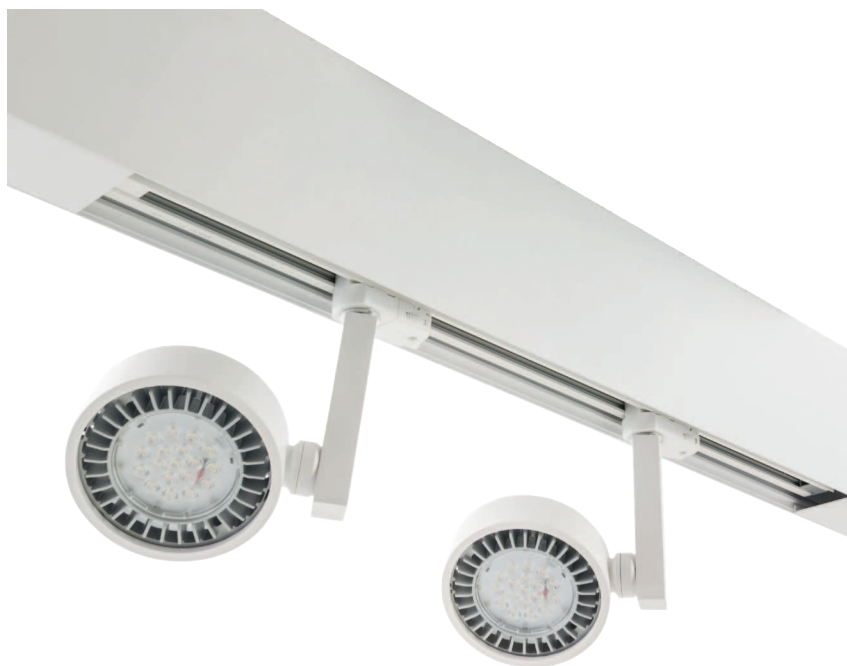


PROFI H SYSTEM



Suspended direct/indirect Profi H System LED lighting run is available in different lengths and setup of lighting equipment. We can combine direct or indirect lighting with runs of empty profile. Philips, OSRAM or Tridonic LED boards are used in our indirect lighting panel. Universal 3 phase track system is used as a mounting base for any type of Imperial LED track spots. Standard system components presented in this leaflet can be customized according to customer's requirements.

Mounting:	Suspended, standard 1,5 m steel wire suspensions included
Body material:	Aluminium profile
Colour:	Standard Gray 9006, other RAL colours on request (please add RAL code after index number)
LED module:	Philips / Osram / Tridonic or equivalent LED module included
Colour temperature:	3000K or 4000K
Colour Rendering Index (CRI)	>80 in standard , other on request
Driver:	Electronic driver in standard, DALI on request
Emergency unit:	on request - Standard or DALI 3 hour emergency unit
Movement sensor:	on request
Daylight control sensor:	on request
Operating temperature range:	0°C ... +40°C
Power supply:	3 phase track system included - build inside the bottom part of aluminium profiles
IP Class:	IP20
Power :	220-240V 50/60Hz
Lighting direction:	Direct - spot lamps (to be ordered separately) / Indirect - LED modules
Reflector type:	Aluminium white
Light distribution:	Symmetric
Diffuser:	Acrylic frosted [AC] in standard, other on request
General data:	5 Years standard warranty

IP20

 220-240 V
50-60 Hz

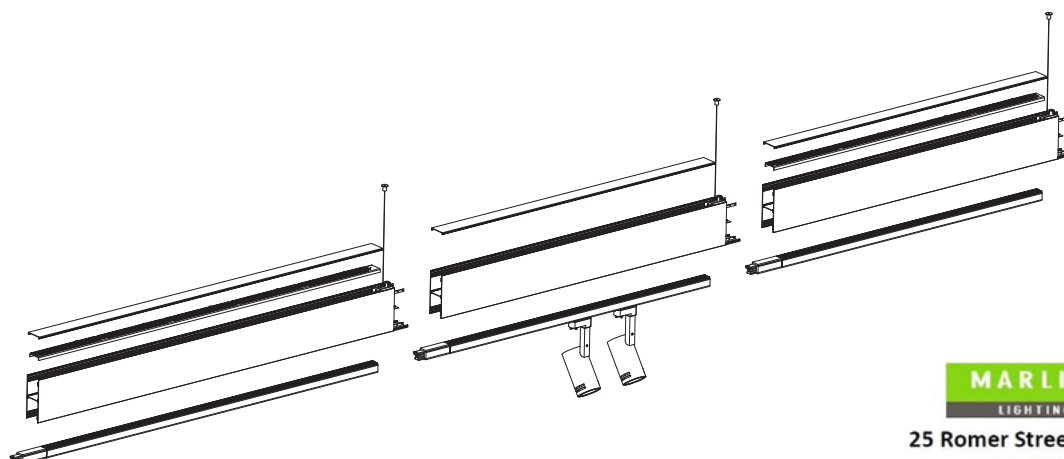

Index no.	Lumen output [lm]	Power [W]	Colour temp. [K]	CRI	Lifetime [H]	Warranty [Years]	MacAdam [SDCM]	Weight [kg]
PROFI H SYSTEM 1200								
5406.4400/830	4400	29	3000	Ra > 80	50.000	5	3	5,00
5406.4400/840	4400	29	4000	Ra > 80	50.000	5	3	5,00
PROFI H SYSTEM 1500								
5407.5500/830	5500	36	3000	Ra > 80	50.000	5	3	7,00
5407.5500/840	5500	36	4000	Ra > 80	50.000	5	3	7,00

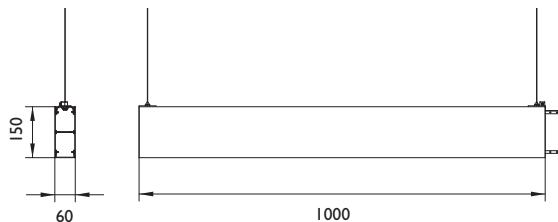
Different lumen output or wattage available on request

All other technical features such as : Luminaire Efficacy, LOR, Lumen maintenance L/B etc. available in our pricelist

Wattage of products may vary due to constant LED efficacy improvements. Luminous flux & Luminaire Power tolerance +/- 10%.

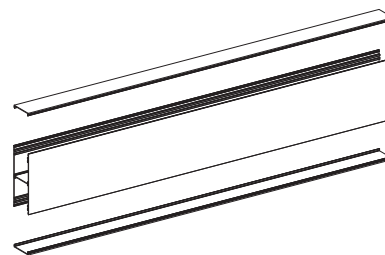
System power consumption (LED module & driver) depends on components used



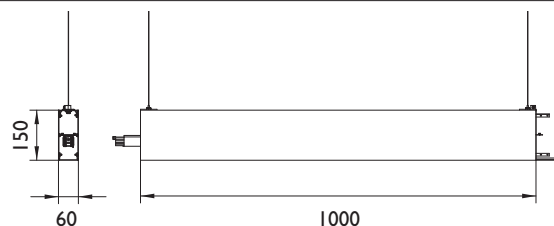


PROFI H SYSTEM 1MR

Profi H System 1m run - empty profile can be ordered in any length up to six meters in one piece. Top and bottom of H profile is closed with aluminium cover. Empty profile run can be used to create different lengths of profi H system and is equipped with line connectors.

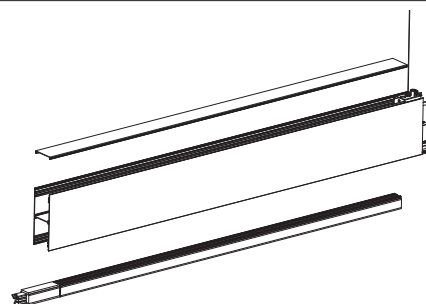


Index no.	Length	Weight
005404/1m	1 m	4,00 kg

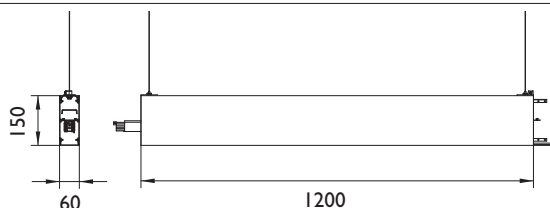


PROFI H SYSTEM 1MR/3P

Profi H System 1m run with 3 phase track in bottom part of profile. Profile can be ordered in any length up to six meters in one piece. Top of H profile is closed with aluminium cover. Profile run can be used to create different lengths of profi H system and is equipped with line connectors and ceiling suspension system (1,5 m in standard, other lengths in request).

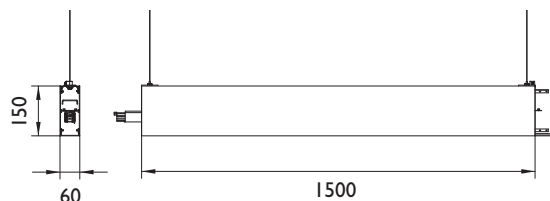
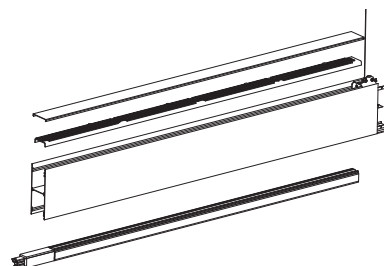


Index no.	Length	Weight
005405/1m	1 m	4,00 kg



PROFI H SYSTEM 1200 (5406)

Profi H System 1,2 m long system run with 3 phase track in bottom part of profile and 4400 lm LED board in top part - indirect light. Top of H profile is closed with acrylic cover. Profile run can be used as part of profi H system and is equipped with line connectors and ceiling suspension system (1,5 m in standard, other lengths in request).



PROFI H SYSTEM 1500 (5407)

Profi H System 1,5 m long system run with 3 phase track in bottom part of profile and 5500 lm LED board in top part - indirect light. Top of H profile is closed with acrylic cover. Profile run can be used as part of profi H system and is equipped with line connectors and ceiling suspension system (1,5 m in standard, other lengths in request).

